

Test Report

NO.: MZCFDIXN19069704

Date: Dec 15, 2015

Page 1 of 4

Applicant: Alent Alpha Metals (Shenzhen) Co., Ltd

The following sample(s) was/were submitted and identified on behalf of the client as:

Sample Name: SACX0307 CVP390 Solder Paste
Manufacturer: Alent Alpha Metals (Shenzhen) Co., Ltd
Lot No.: 20892037WL

Sample Received Date: Dec 11, 2015
Testing Period: Dec 11, 2015 TO Dec 15, 2015

Reference Requested: RoHS Directive 2011/65/EU Annex II

Reference Method:

- (1) IEC 62321-5 Edition 1.0:2013 method, Lead Analysis is performed by AAS
- (2) IEC 62321-5 Edition 1.0:2013 method, Cadmium Analysis is performed by AAS
- (3) IEC 62321-4 Edition 1.0:2013 method, Mercury Analysis is performed by ICP-OES
- (4) IEC 62321 Edition 1.0:2008 method, Hexavalent Chromium Analysis is performed by UV-Vis
- (5) IEC 62321 Edition 1.0:2008 method, PBBs and PBDEs Analysis is performed by GC-MS

Test Result: Please refer to next page(s)

Conclusion: Based on the performed tests on submitted samples, the results of Lead, Mercury, Cadmium, Hexavalent chromium, Polybrominated biphenyls (PBBs), Polybrominated diphenyl ethers (PBDEs) comply with the limits as set by RoHS Directive 2011/65/EU Annex II.

Approved by:



Code: d2by9v78



www.ponytest.com ☎ Hotline 400-819-5688

BeijingLab: (010) 82618116 ChangchunLab: (0431) 85150908 ShanghaiLab: (021) 64851999 ShenzhenLab: (0755) 26050909
QingdaoLab: (0532) 88706866 DalianLab: (0411) 84650820 NingboLab: (0574) 87736499 GuangzhouLab: (020) 89224310
TianjinLab: (022) 27360730 ZhengzhouLab: (0371) 69350670 HangzhouLab: (0571) 87219096 WuhanLab: (027) 83997127

Test Report

NO.: MZCFDIXN19069704

Date: Dec 15, 2015

Page 2 of 4

Test Result (Unit: mg/kg)

Test Item	MDL	Test Result	RoHS Limit
Lead (Pb)	1	N.D.	1000
Cadmium (Cd)	1	N.D.	100
Mercury (Hg)	1	N.D.	1000
Hexavalent Chromium (Cr ⁶⁺)	1	N.D.	1000
Sum of PBBs	—	N.D.	1000
Bromobiphenyl	5	N.D.	—
Dibromobiphenyl	5	N.D.	—
Tribromobiphenyl	5	N.D.	—
Tetrabromobiphenyl	5	N.D.	—
Pentabromobiphenyl	5	N.D.	—
Hexabromobiphenyl	5	N.D.	—
Heptabromobiphenyl	5	N.D.	—
Octabromobiphenyl	5	N.D.	—
Nonabromobiphenyl	5	N.D.	—
Decabromobiphenyl	5	N.D.	—
Sum of PBDEs	—	N.D.	1000
Bromodiphenyl ether	5	N.D.	—
Dibromodiphenyl ether	5	N.D.	—
Tribromodiphenyl ether	5	N.D.	—
Tetrabromodiphenyl ether	5	N.D.	—
Pentabromodiphenyl ether	5	N.D.	—
Hexabromodiphenyl ether	5	N.D.	—
Heptabromodiphenyl ether	5	N.D.	—
Octabromodiphenyl ether	5	N.D.	—
Nonabromodiphenyl ether	5	N.D.	—
Decabromodiphenyl ether	5	N.D.	—

- Note:
- (1) mg/kg = ppm
 - (2) "—" = Does not stipulate
 - (3) N.D. = Not Detected (<MDL)
 - (4) MDL = Method Detection Limit
 - (5) The most allowable limit value reference to RoHS Directive 2011/65/EU Annex II



www.ponytest.com ☎ Hotline 400-819-5688

BeijingLab: (010) 82618116 ChangchunLab: (0431) 85150908 ShanghaiLab: (021) 64851999 ShenzhenLab: (0755) 26050909
 QingdaoLab: (0532) 88706866 DalianLab: (0411) 84650820 NingboLab: (0574) 87736499 GuangzhouLab: (020) 89224310
 TianjinLab: (022) 27360730 ZhengzhouLab: (0371) 69350670 HangzhouLab: (0571) 87219096 WuhanLab: (027) 83997127

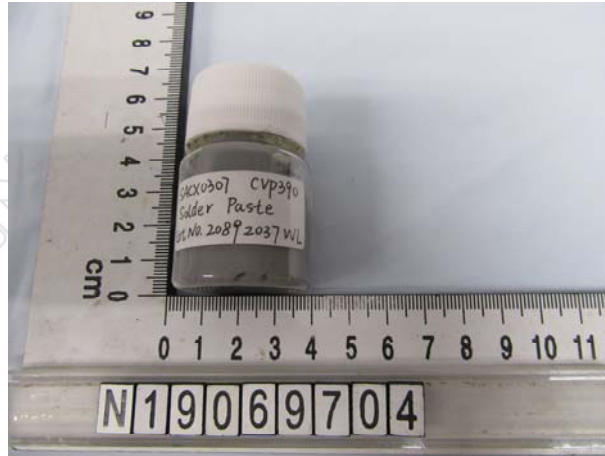
Test Report

NO.: MZCFDIXN19069704

Date: Dec 15, 2015

Page 3 of 4

Sample No. & Photo:



Pony authenticate the photo on original report only



www.ponytest.com ☎ Hotline 400-819-5688

BeijingLab: (010) 82618116 ChangchunLab: (0431) 85150908 ShanghaiLab: (021) 64851999 ShenzhenLab: (0755) 26050909
QingdaoLab: (0532) 88706866 DalianLab: (0411) 84650820 NingboLab: (0574) 87736499 GuangzhouLab: (020) 89224310
TianjinLab: (022) 27360730 ZhengzhouLab: (0371) 69350670 HangzhouLab: (0571) 87219096 WuhanLab: (027) 83997127

Test Report

NO.: MZCFDIXN19069704

Date: Dec 15, 2015

Page 4 of 4

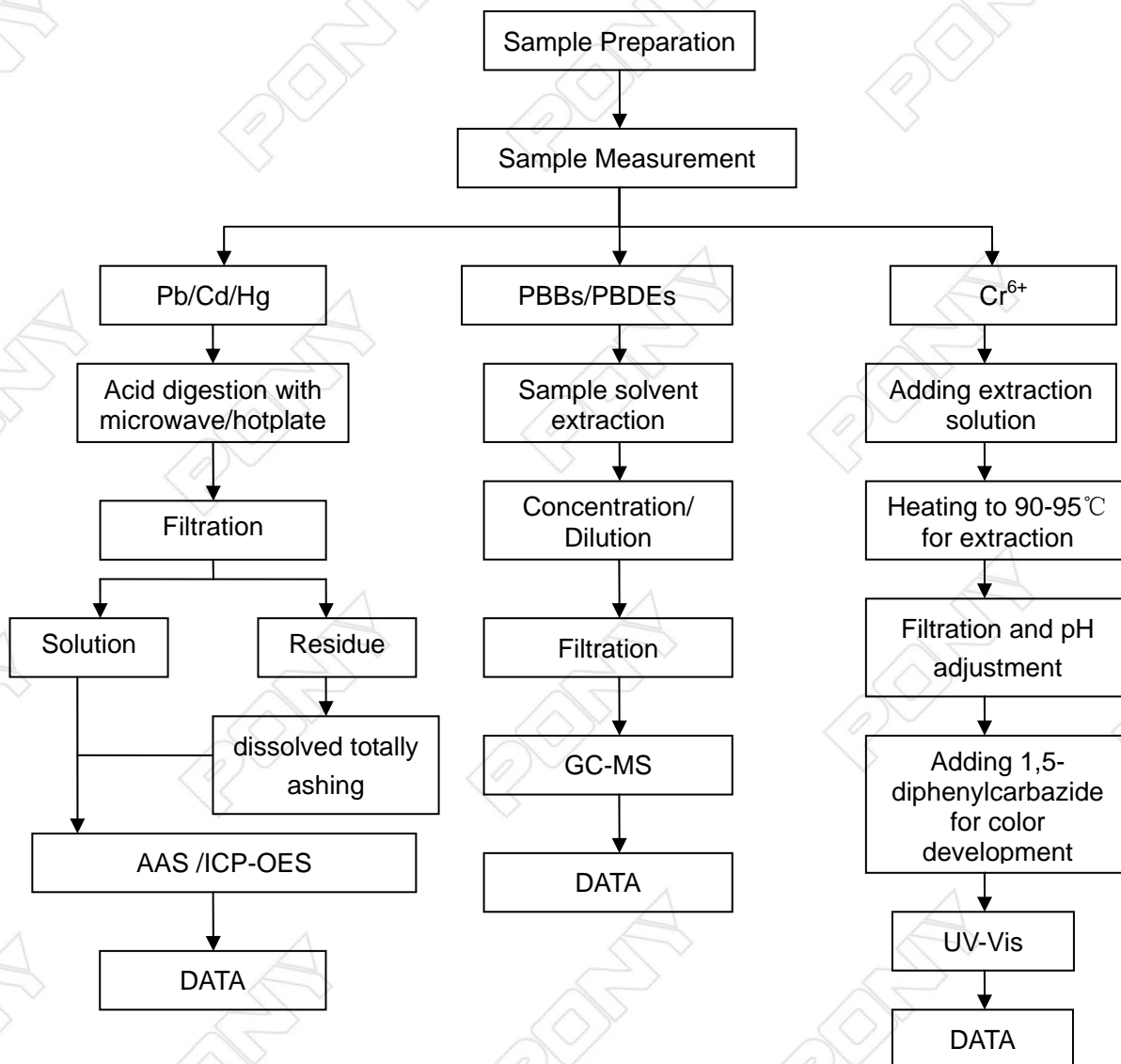
Measurement Flow-chart

Tested by: Li Chuhua

Checked by: Yang Xin

Person in charge of the lab by: Zhao Yanyuan

These Samples Were Dissolved Totally By Pre-conditioning Method According To Below Flow Chart. (Cr⁶⁺ And PBBs/PBDEs Test Method Excluded)



End of Report



www.ponytest.com ☎ Hotline 400-819-5688

BeijingLab: (010) 82618116 ChangchunLab: (0431) 85150908 ShanghaiLab: (021) 64851999 ShenzhenLab: (0755) 26050909
QingdaoLab: (0532) 88706866 DalianLab: (0411) 84650820 NingboLab: (0574) 87736499 GuangzhouLab: (020) 89224310
TianjinLab: (022) 27360730 ZhengzhouLab: (0371) 69350670 HangzhouLab: (0571) 87219096 WuhanLab: (027) 83997127